

Lafourche Parish Water District No. 1

P.O. BOX 399
LOCKPORT, LOUISIANA 70374

AREA CODE 985
PHONE 532-6924
FAX 532-3667

RE: Lafourche Parish Water District No. 1
Public Service Announcement # 122022

Water Conservation Notice

Released as of Tuesday, December 20, 2022, 1:00 pm

Social Media Disclaimer:

If you are viewing this Public Service Announcement on Social Media, you are urged to visit www.lpwdla.org to confirm it is accurate and up to date.

For Immediate Release:

The Lafourche Parish Water District No. 1 is issuing a WATER CONSERVATION NOTICE for all customers serviced by the District.

This Water Conservation Notice is being issued because of the impending arctic cold front bringing prolonged sub-freezing temperatures to our area which will likely cause a tremendous demand on our water system. Customers are asked to conserve water and refrain from non-essential water use until further notice. If you choose to “drip” your water to prevent frozen water pipes, you are asked to turn the water off once temperatures reach or go above the freezing mark to allow the water system to replenish itself. Your cooperation is vital to ensure adequate water quality and quantity are preserved for all communities within our water system. Thank you for your assistance.

Updates:

Customers should stay tuned to News Media outlets and monitor the Lafourche Parish Water District’s Website at www.lpwdla.org or like us on facebook for further updates and additional information.

News Media Note:

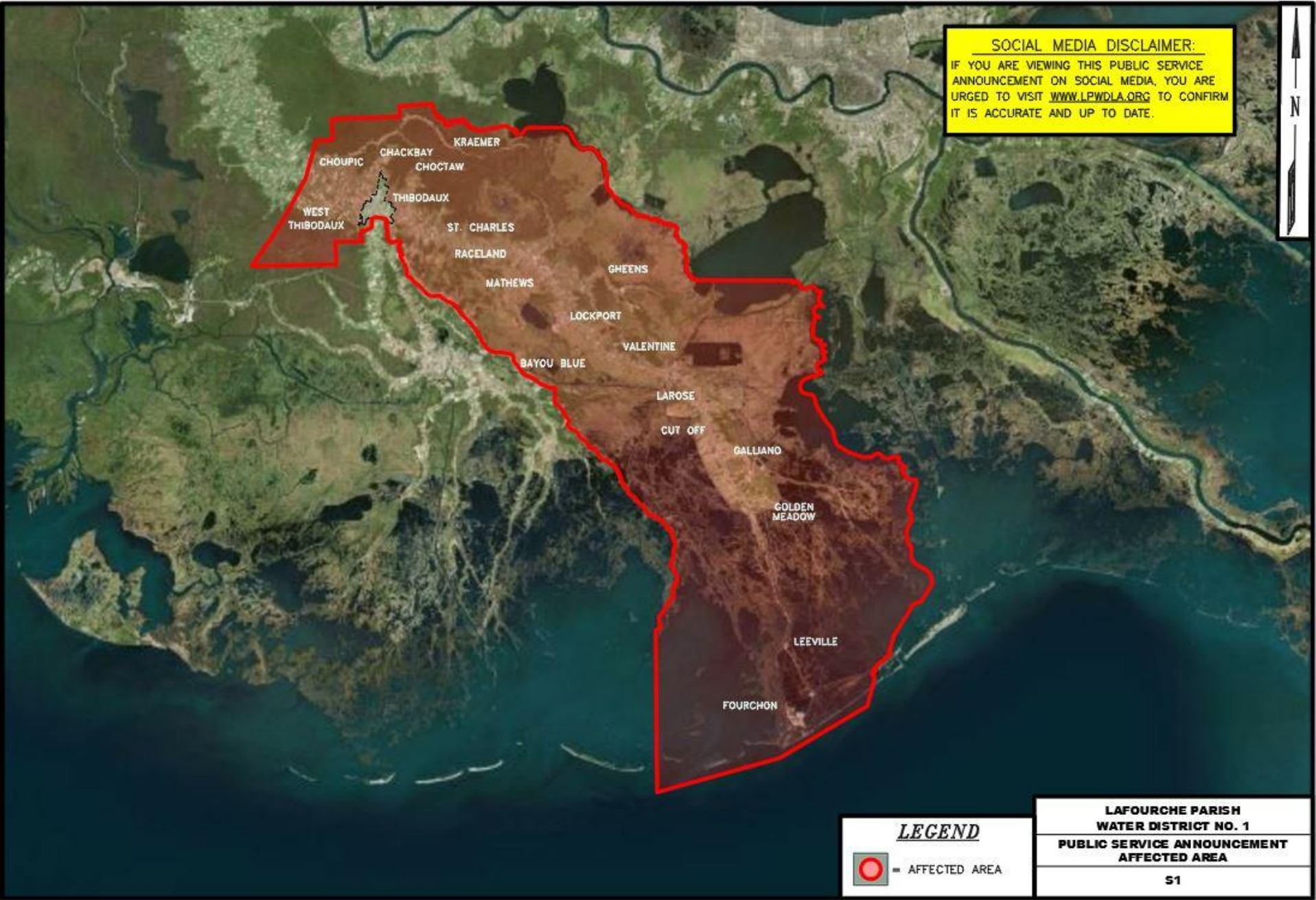
Please repeat this announcement several times a day until further notice and advise the public that this information, along with future updates will be posted on the Lafourche Parish Government Website at www.lafourchegov.org.



Wayne Gautreaux
General Manager
Lafourche Parish Water District No. 1

Enclosure: Affected Area Map

SOCIAL MEDIA DISCLAIMER:
IF YOU ARE VIEWING THIS PUBLIC SERVICE ANNOUNCEMENT ON SOCIAL MEDIA, YOU ARE URGED TO VISIT WWW.LPWDLA.ORG TO CONFIRM IT IS ACCURATE AND UP TO DATE.



LEGEND

 = AFFECTED AREA

**LAFORCHE PARISH
WATER DISTRICT NO. 1
PUBLIC SERVICE ANNOUNCEMENT
AFFECTED AREA**

S1