

# Lafourche Parish Water District No. 1

P.O. BOX 399  
LOCKPORT, LOUISIANA 70374

AREA CODE 985  
PHONE 532-6924  
FAX 532-3667

RE: Lafourche Parish Water District No. 1  
Public Service Announcement # 013024

## Boil Water Advisory

Released as of Tuesday, January 30, 2024, 3:00pm

### Social Media Disclaimer:

If you are viewing this Public Service Announcement on Social Media, you are urged to visit [www.lpwdla.org](http://www.lpwdla.org) to confirm it is accurate and up to date.

### For Immediate Release:

Effective immediately, the Lafourche Parish Water District No. 1 is issuing a **BOIL WATER ADVISORY** for Marydale Subdivision (in Thibodaux).

The District purchases water from Terrebonne Consolidated Waterworks to service this area. We were notified by Terrebonne Water that there was a drop in water pressure in their distribution system due to a main line leak. As a result, the water in the affected area is of questionable microbiological quality. Therefore, as a precaution, this **BOIL WATER ADVISORY** is effective immediately and will remain in effect until rescinded by the District.

### Additional Information:

It is recommended that all customers who are included in the Boil Water Advisory disinfect their water before consuming it, making ice, brushing teeth, using it for food preparation (including fountain drinks), and for rinsing food by the following means:

Boil water for one (1) full minute in a clean container. The one-minute starts after the water has been brought to a rolling boil. (The flat taste can be eliminated by shaking the water in a clean bottle, pouring it from one clean container to another, or by adding a small pinch of salt to each quart of water that is boiled.)

Again, please be sure to disinfect your own water prior to consumption until you have been advised otherwise.

The Lafourche Parish Water District will rescind this Boil Advisory upon notification from the Louisiana Department of Health– Office of Public Health after additional samples collected from our water supply have shown our water to be safe.

### Updates:

Customers should stay tuned to News Media outlets and monitor the Lafourche Parish Water District's Website at [www.lpwdla.org](http://www.lpwdla.org) for further updates and additional information.

### News Media Note:

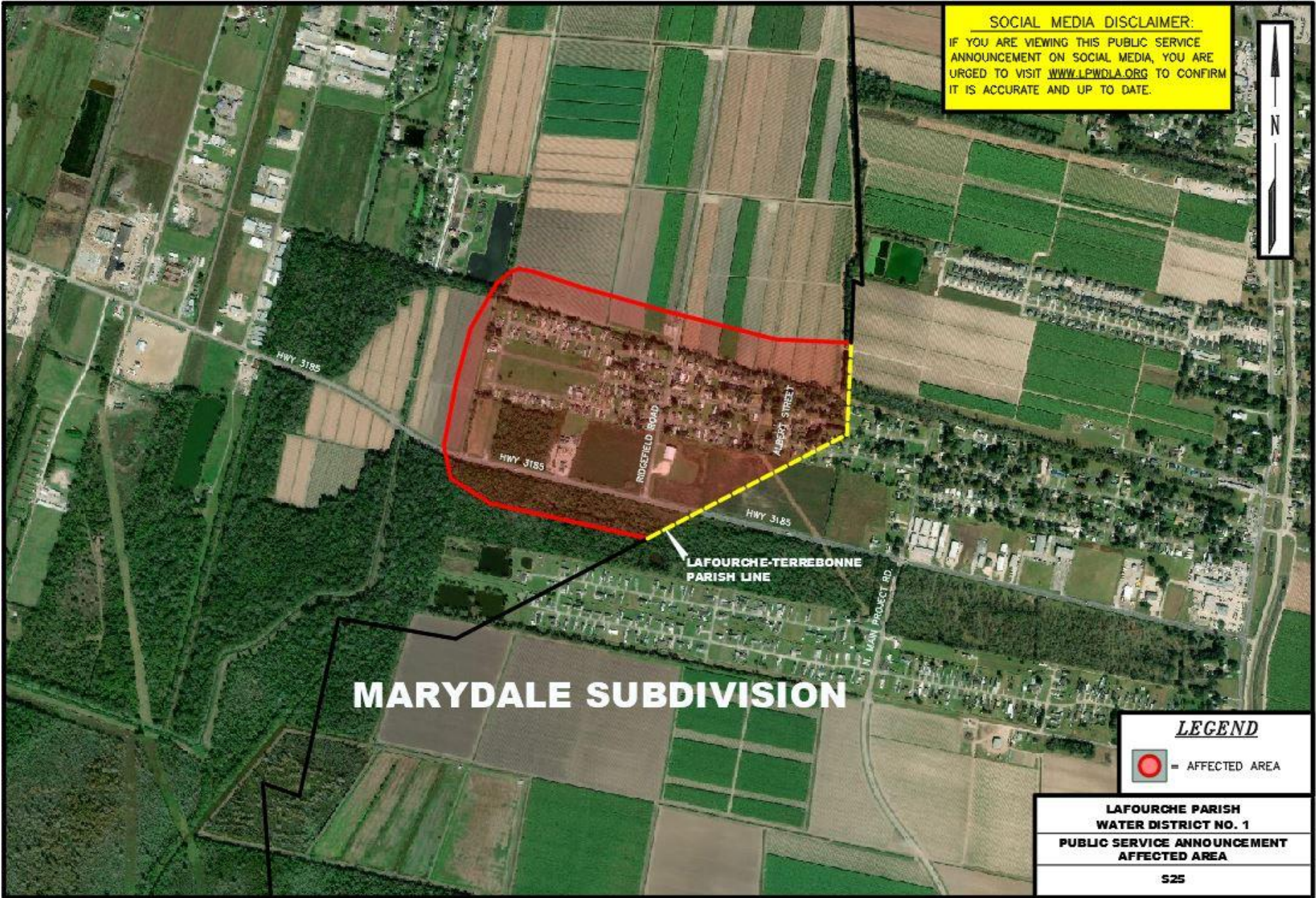
Please repeat this announcement several times a day until further notice and advise the public that this information, along with future updates will be posted on the Lafourche Parish Water District's Website at [www.lpwdla.org](http://www.lpwdla.org).



Wayne Gautreaux  
General Manager  
Lafourche Parish Water Dist. No. 1

Enclosure: Affected Area Map

**SOCIAL MEDIA DISCLAIMER:**  
IF YOU ARE VIEWING THIS PUBLIC SERVICE ANNOUNCEMENT ON SOCIAL MEDIA, YOU ARE URGED TO VISIT [WWW.LPWDLA.ORG](http://WWW.LPWDLA.ORG) TO CONFIRM IT IS ACCURATE AND UP TO DATE.



**MARYDALE SUBDIVISION**

LAFORCHE-TERREBONNE  
PARISH LINE

**LEGEND**

 = AFFECTED AREA

**LAFORCHE PARISH  
WATER DISTRICT NO. 1  
PUBLIC SERVICE ANNOUNCEMENT  
AFFECTED AREA**

S25